



Our Geography Curriculum



***“Dingle Community Primary School,
where every child has a V.O.I.C.E”***



“GEOGRAPHY IS NOT JUST
ABCRADIO.FM
A SUBJECT TO BE STUDIED;
IT IS A WAY OF SEEING
THE WORLD AND
UNDERSTANDING OUR
PLACE IN IT.”









***“Dingle Community Primary School,
where every child has a V.O.I.C.E”***



Key concepts

Through collaboration with subject leaders, specialists and our cluster of local schools, our school community have developed key concepts for each subject. These key concepts are the skills and knowledge essential to pupils achieving and exceeding standards in Geography. They are subject specific and allow children to progressively build skills throughout their Dingle journey. When pupils encounter a key concept, they will revisit other topics where they learnt about the same concept to enable them to make connections and build the schema they need.

Geography

| | | | | | |
|---|---|---|--|---|---|
|  |  |  |  |  |  |
| Locational Knowledge | Place Knowledge | Navigation | Fieldwork | Human Geography | Physical features and processes |



***“Dingle Community Primary School,
where every child has a V.O.I.C.E”***



Key concepts

Pupils will develop an understanding of the physical process that shape our landscapes and how humans impact on the land and environment. They will develop an understanding of how to use maps and build knowledge of significant locations and places, so they better understand the world in which they live. They will learn how to compare where they live to other places in the world by building their knowledge of different regions of our planet.



Locational Knowledge

Pupils will build and develop their knowledge of important places and areas of the world. They will develop the knowledge to be able to name and locate key towns and cities, countries, continents, seas and oceans as well as key regions such as the equator, and northern and southern hemispheres.



Place Knowledge

Pupils will learn how to compare and contrast places, regions and countries according to key physical and human features.



Navigation

Pupils will learn how to read and interpret maps, keys, scale, atlases and globes as well as knowing the points of a compass.



Fieldwork

Fieldwork is a key component of geography and pupils will learn how to carry this out in different settings with increasing accuracy. They will learn how to observe and record their findings, how to collect, present and interpret fieldwork data, using instruments and equipment and take measurements.



Human Geography

Pupils will learn how humans use and influence the landscape and develop an understanding of the relationship between the physical environment and trade, settlement and transport. They will learn about population, economic activity, human features, settlements and sustainability, including the impact of humans on climate.



Physical Features and Processes

Pupils will develop an understanding of different physical environments in their locality and around the world. They will learn about physical processes, physical features, tectonic activity, natural resources, climate and landscape.



***“Dingle Community Primary School,
where every child has a V.O.I.C.E”***



Our Curriculum Overview


| <u>We are Geographers</u> | Autumn | Spring | Summer |
|---------------------------|--|---|---|
| Year 1 | Where do I live? | What can we learn about the United Kingdom? | How does the weather change during the year? |
| Year 2 | | What can we find out about the world's continents and oceans? | Where are the world's hot and cold places and how are they different? What similarities and differences are there between our local area and Mugurameno? |
| Year 3 | What is climate and how does it vary around the world? | What are mountains and how are they formed? | How are coasts changing? |
| Year 4 | Why is our local area special and how has it changed over time? | What lies beneath the surface of the Earth and how does this affect us? | What makes Antarctica such a special continent and why should it be protected? |
| Year 5 | How does North America compare to where we live? | What is Greece like and why is it a popular place to visit? | How do rivers impact human and physical geography? Where is the Amazon rainforest and why does it matter so much? |
| Year 6 | What are the main human and physical features of the United Kingdom? | What is the Amazon and why does it need to be protected? | How does my region meet people's needs and fit into the wider world? |



***“Dingle Community Primary School,
where every child has a V.O.I.C.E”***



Our Curriculum Overview

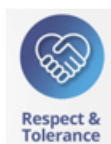
| We are Geographers | Autumn | Spring | Summer |
|--|---|--------|--------|
| <p>EYFS</p>  | <p>In EYFS, pupils are taught Geography through the strand of Understanding the World. They will be taught where they live and their local environment.</p> | | |



***“Dingle Community Primary School,
where every child has a V.O.I.C.E”***



Year 1



Where do I live?

Pupils will learn about the main features of our local area and school and will use maps to support this learning.



What can we learn about the United Kingdom?

Pupils will name and locate the four countries of the UK (including capital cities and surrounding seas). They will also be introduced to human and physical features.



How does the weather change during the year?

Pupils will learn about the changing seasons and weather patterns. They will consider how this affects people.



***“Dingle Community Primary School,
where every child has a V.O.I.C.E”***



Year 2



What can we find out about the world's continents and oceans?

Pupils will name and locate the continents and oceans of the world, using a variety of maps and a globe. They will make comparisons based upon physical and human features.



Where are the world's hot and cold places and how are they different?

Pupils will locate hot and cold places around the world and will learn about animals and how they adapt to these habitats.



What similarities and differences are there between our local area and Mugurameno?

Pupils will complete an in-depth study of the village Mugurameno, in Zambia. They will compare physical and human features with their local area.



***“Dingle Community Primary School,
where every child has a V.O.I.C.E”***



Year 3



What is climate and how does it vary around the world?

Pupils will study climate zones around the world and will make comparisons with the UK.



What are mountains and how are they formed?

Pupils will study the formation of mountains and will locate mountains in the UK and around the world.



How are coasts changing?

Pupils will use maps of varying scales to locate coastlines in the UK and will discuss how natural elements can affect and change our coasts.



***“Dingle Community Primary School,
where every child has a V.O.I.C.E”***



Year 4



Why is our local area special and how has it changed over time?

Pupils will learn about and locate The Black Country. They will study a range of maps and will identify how our area has changed over time. They will complete fieldwork and identify improvements that could be made to our area.



What lies beneath the surface of the Earth and how does this affect us?

Pupils will learn about how volcanic eruptions and earthquakes are caused. They will identify natural disasters from the past and will consider the impact on the environment and the local population.



What makes Antarctica such a special continent and why should it be protected?

Pupils will become a 2041 school and will follow Olive's adventures to Antarctica. They will learn about the landscape, wildlife and the important research that takes place in this continent. This will enable them to consider in depth why Antarctica needs to be protected.



***“Dingle Community Primary School,
where every child has a V.O.I.C.E”***



Year 5



How does North America compare to where we live?

Pupils will locate North America and the USA. They will look at physical features of US states and will make comparisons between New York and our neighbouring cities.



What is Greece like and why is it a popular place to visit?

Pupils will locate Greece and will study the human and physical features of this country. Through this in-depth study they will be able to ascertain why migrants and holidaymakers visit.



How do rivers impact human and physical geography?

Pupils will understand how rivers are formed, will label the parts of rivers and will locate rivers in the UK and around the world. They will also consider how people change rivers and the impact flooding can have on communities.



Where is the Amazon rainforest and why does it matter so much?

Pupils will locate rainforests around the world and will discuss their features. They will gain an understanding of why rainforests are being destroyed and will consider why the Amazon rainforest needs to be protected.



“Dingle Community Primary School, where every child has a V.O.I.C.E”



Year 6



What are the main human and physical features of the United Kingdom?

As well as studying human and physical features of the countries of the UK, children will look at population patterns and will consider how the UK meets its energy needs.



What is the Amazon and why does it need to be protected?

Linking to their prior learning about rainforests and rivers, pupils will study the Amazon Basin in detail and will understand the vital role that it plays and why it needs to be protected.



How does my region meet people's needs and fit into the wider world?

This unit will focus on our local area and will consider how our location meets the needs of the local population. Fieldwork will be conducted before comparisons are made with contrasting regions.



***“Dingle Community Primary School,
where every child has a V.O.I.C.E”***



Our Dingle Values

“Dingle Community Primary School, where every child has a V.O.I.C.E”

V – be Valued for who we are

O – have Opportunities to grow, thrive and make a difference

I – Feel Included with a sense of belonging

C – Care for and be part of our community.

E – have high Expectations of ourself and others

“A child who feels heard becomes a child who dares to dream”



We show **inclusivity** and **respect** for all cultures and enjoy learning about populations around the world. We **respect** the views of our classmates and enjoy having open, non-judgmental conversations and debates. We enjoy reading and learning about famous geographers who have been **ambitious** and encountered challenges, showing **resilience**. We aim high in every lesson and enjoy challenging ourselves in our learning.



***“Dingle Community Primary School,
where every child has a V.O.I.C.E”***



Our Dingle Values

“Dingle Community Primary School, where every child has a V.O.I.C.E”

V – be Valued for who we are

O – have Opportunities to grow, thrive and make a difference

I – Feel Included with a sense of belonging

C – Care for and be part of our community.

E – have high Expectations of ourself and others

“A child who feels heard becomes a child who dares to dream”



We show **inclusivity** and **respect** for all cultures and enjoy learning about populations around the world. We **respect** the views of our classmates and enjoy having open, non-judgmental conversations and debates. We enjoy reading and learning about famous geographers who have been **ambitious** and encountered challenges, showing **resilience**. We aim high in every lesson and enjoy challenging ourselves in our learning.



***“Dingle Community Primary School,
where every child has a V.O.I.C.E”***



We are incredibly proud to be working towards our Rights Respecting Schools award.

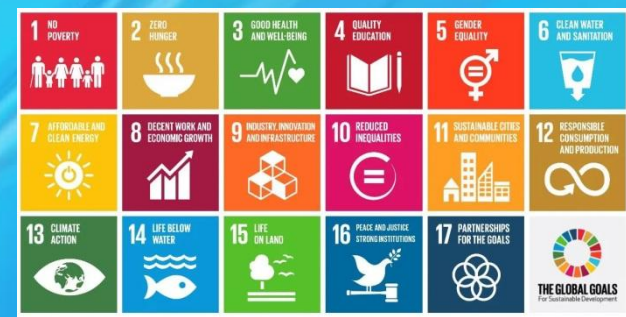
Rights are becoming an essential part of our curriculum and articles are therefore referenced in all our subjects.



British Values are an integral part of our curriculum, and we purposefully plan many opportunities to help our children understand and celebrate life in modern Britain.



Sustainability and caring for our world is another area of significance to our curriculum. We therefore ensure the Global Goals for Sustainable Development are also considered and shared with our pupils.



“Dingle Community Primary School, where every child has a V.O.I.C.E”



**Information
about our Eco
Ambassadors and
our Eco Schools
Journey**



**Our Intent
Documentation**

**Our Climate
Change
Action Plan**

**Please visit our
Geography Curriculum
webpage to find more
information.**



**Progression
of our key
concepts**

**How we support
SEND in
geography**

**Global
Sustainability
Goals**



***"Dingle Community Primary School,
where every child has a V.O.I.C.E"***

