

1

# WELCOME

## YEAR 6 PIONEER CENTRE RESIDENTIAL

Good afternoon everyone and thank you for coming.



Today's meeting is designed to:

- ✓ Explain how the residential will work
- ✓ Share important information about accommodation, activities and safety
- ✓ Explain what children need to bring
- ✓ Explain medication and medical arrangements
- ✓ Answer any questions you may have



Our aim is for every child to have a safe, enjoyable and memorable experience as they prepare to leave primary school.



# 2

# WHY WE GO

The residential is about much more than activities.

Children develop:

- ✓ Independence
- ✓ Resilience
- ✓ Confidence
- ✓ Teamwork
- ✓ Problem-solving skills
- ✓ New friendships



Many children leave the residential having achieved something they never thought they could do.



Building skills, confidence and memories that last a lifetime!



# 3

## WHERE WE ARE STAYING

A safe, comfortable and friendly place to stay, learn and have fun!

The children will be staying at the **Pioneer Centre** in Cleobury Mortimer.

Accommodation is in lodge-style dormitories with staff sleeping within the same accommodation area.

### The centre provides:

- ✓ Fully equipped accommodation
- ✓ Dining facilities
- ✓ Qualified activity instructors
- ✓ First aid provision
- ✓ Secure site and activity areas



Comfortable lodges



Dormitory accommodation



Dining hall



Activity areas



Spacious and secure site



The accommodation arrangements must be submitted to the centre before arrival as part of their statutory safety procedures.



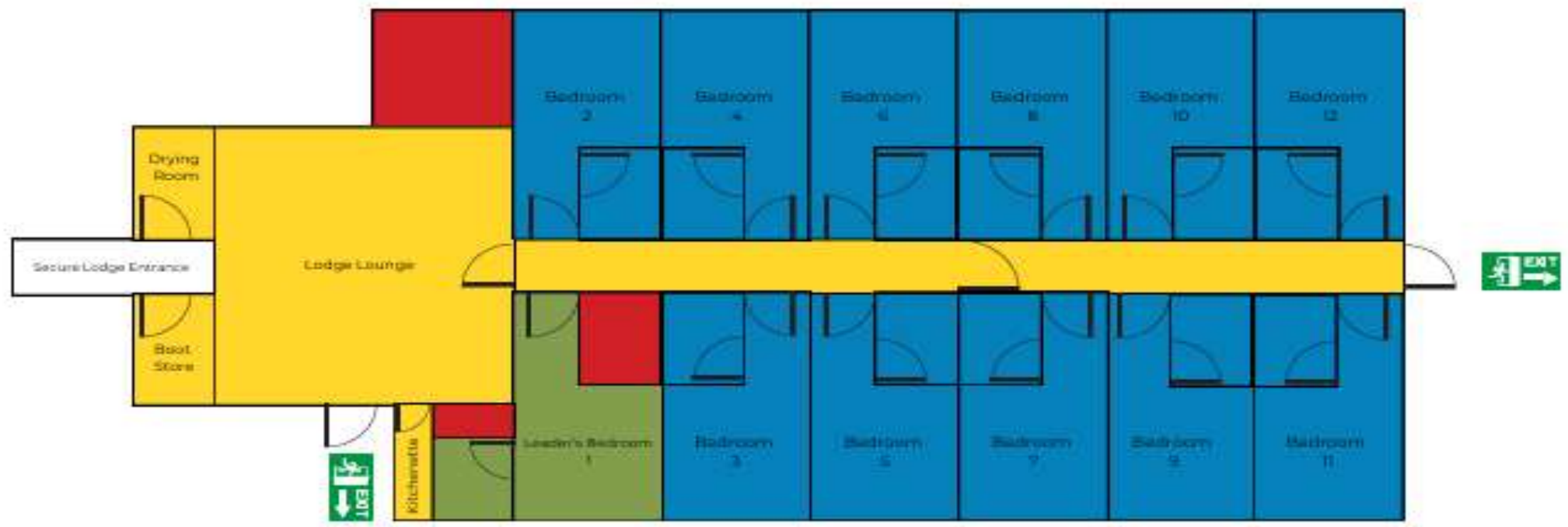
A great environment for children to learn, grow and make memories!

## Pioneer



# Baffin Lodge

Pioneer Ground floor



All bedrooms are ensuite with bath tubs

## KEY

- 2 Beds (2 single beds)
- 4 Beds (2 single & 1 bunk)
- Secure Lodge Area
- Staff Only



# 4

# ACTIVITIES

Children will take part in a range of adventurous activities including:



High Ropes



Climbing



Caving



Raft Building



Nightline



Fencing



Abseil &  
Zip Wire



Campfire  
Evening



Activities are delivered by trained instructors and may be amended if weather conditions require.



Challenging, exciting and lots of fun!

# Dingle Community Primary School Activity Programme

	Monday 6th July 2026				Tuesday 7th July 2026					Wednesday 8th July 2026							
Session Times	2-3.30	4-5.30	DINNER TIME		9.30-11	11.30-1	LUNCH TIME	2-3.30	4-5.30	DINNER TIME	7.15-8.30	9.30-11	11.30-1	Lunch Time	Depart & Goodbyes		
	Session	Session		Session	Session	Session		Session	Session		Session	Session	Session			Session	Session
	3	4		5	1	2		3	4		5	1	2				
Group 1	HIGH ROPES	CLIMBING		OPEN SESSION	RAFT BUILDING	NIGHTLINE		FENCING	CAVING		CAMP FIRE 2	ABSEIL/ZIP	GAMES SHOP AWARDS				
Group 2	HIGH ROPES	CAVING		OPEN SESSION	RAFT BUILDING	FENCING		NIGHTLINE	CLIMBING		CAMP FIRE 2	ABSEIL/ZIP	GAMES SHOP AWARDS				

*Our individual activity sessions are suitable for up to 14 participants.*

*"Open Session" is a relaxed evening which can be self-organised activities led by the school leaders. Pioneer can supply Activity Packs upon request at reception once onsite. Shop will also be available. Please note there are no centre led activities during this session slot and groups leaders are responsible to manage their groups during this period.*

*We reserve the right to change activity programmes according to circumstance .*

# 5

# BEHAVIOUR EXPECTATIONS



School behaviour expectations remain in place throughout the visit.

As always, children are representing Dingle Community Primary School.

We expect:



Respect for others



Good manners



Listening carefully to adults



Following safety instructions



Looking after equipment and accommodation



By working together and showing respect, we can make sure everyone has a safe, happy and memorable experience.



Be kind, be responsible, be a great ambassador for Dingle!

# 6

# MEALS

The Pioneer Centre provides delicious, nutritious meals every day.



## We provide:

- Breakfast
- Lunch
- Evening meal



## Dietary requirements

We can cater for a wide range of dietary needs and allergies. Please let us know any requirements on the parent form.



## Day 1 packed lunch

The centre advises that residential groups arrive before the first evening meal, so children should bring a packed lunch on the first day.



## Special diets & allergies

The centre operates strict procedures for special diets and allergies to keep all children safe.  
Your information helps us plan ahead.



## Please remember

Children should bring a refillable water bottle to keep them hydrated throughout the day.



Good food gives us energy for fun, learning and adventure!

# 7

# SAFETY

Keeping children safe is our top priority.



We follow the latest guidance from the Department for Education (DFE) for school trips and residential visits.

We have a number of procedures in place:



Risk assessments are carried out regularly.



All staff are DBS checked, trained and experienced.



First aiders are on site at all times.



Secure site with controlled access.



24-hour on-site staff and emergency procedures in place.



## Children's safety & wellbeing

Please talk to a member of staff if you have any questions or concerns.



Safe, secure and caring – so children can enjoy and achieve!

# 8

# COMMUNICATION

We believe in keeping everyone informed and working in partnership with you.



## During your visit

- Staff will share with school when we have arrived and leaving the site and this will be shared with you.
- We may share pictures of the children completing activities on our school facebook page to keep you updated.



## Sharing memories

We may share photos of the children completing activities with you (where consent has been given).



## Feedback

We welcome your feedback to help us continue to improve our services.



## Contact during your visit



- In the first instance and during school hours parents should contact school in case of a home emergency.
- In case of out of hours emergency a number will be shared with you closer to the time.

## Emergencies



In the event of an emergency, we will contact you as soon as possible.



Good communication helps us work together to give children the best possible experience.

# 9

# MEDICAL ARRANGEMENTS

All medication must be handed directly to staff before departure.

## Please ensure:

- ✓ Medication is clearly labelled.
- ✓ Instructions are provided.
- ✓ Medication is in date.

## This includes:

- Inhalers
- EpiPens
- Antihistamines
- Travel sickness medication
- Any prescribed medicines



**Pain relief medication**  
(e.g. Calpol / Paracetamol)

- If you would like us to administer Calpol/Paracetamol should your child need it, please complete a medication consent form.
- Calpol/Paracetamol will only be given in line with the dosage stated on the form.



A separate medication consent form must be completed for Calpol/Paracetamol.



Parents will need to provide any medication that their child may require during the visit.



Our staff are trained to support children with medical needs.

# 10

# HOMESICKNESS

This is one of the most common concerns for parents.

## Our experience shows:

- ✓ Most children settle very quickly.
- ✓ Children are kept busy throughout the day.
- ✓ Staff are experienced in supporting children who are anxious.
- ✓ Homesickness is usually temporary.



If there is a genuine concern, we will contact you.



We are here to support every child and help them have a positive and enjoyable experience.

11

# MOBILE PHONES AND VALUABLES

Children should not bring:

- ✗ Mobile phones
- ✗ Tablets
- ✗ Smart devices
- ✗ Expensive valuables



The Pioneer Centre specifically advises against bringing high-value or electrical items because they can be lost or damaged.



Our focus is on learning, adventure and making memories – not on devices or valuables.

# 12

# WHAT TO BRING

Please make sure your child is prepared with everything they need for a comfortable and enjoyable stay.

- ✓ Packed lunch for Day 1
- ✓ Waterproof coat
- ✓ Warm clothes
- ✓ Long trousers
- ✓ Trainers (2 pairs if possible)
- ✓ Old clothes for wet/messy activities
- ✓ Nightwear
- ✓ Wash bag
- ✓ Towel
- ✓ Water bottle
- ✓ Sun hat and sun cream
- ✓ Plastic bag for wet clothes
- ✓ Any required medication



Please label everything with your child's name.



This helps us return items if they are misplaced.

# 13

# SPENDING MONEY

Children may bring a small amount of spending money for the centre shop.



**Recommended:** £5 – £10 maximum  
All money should be in a named purse or wallet.



The centre cannot be held responsible for any lost money.



This money will allow your child to choose small items and souvenirs as a reminder of their visit.

14

# QUESTIONS?

*Any questions?*

If anything comes up after tonight,  
please contact the school office  
and we will be happy to help.



**We're here to help!**

We want your child to have a safe,  
happy and memorable experience.  
Please don't hesitate to get in touch  
with any questions or concerns.



**ADVENTURE**



**MEMORIES**



**FRIENDSHIP**



**CONFIDENCE**



**FUN!**

